

Year 6 Autumn - Travel Plan

Key Vocabulary

Hazard	A danger or risk.
Route	A particular way of getting from one place to another.
Graph	Graphs are drawings that show information and data with lines, shapes, and colours.
4-figure references	Four-figure grid references are used to locate a particular grid square on a map.
6-figure references	Six-figure grid references are used to find an exact location within a grid square. They are much more accurate than four-figure grid references.
Scale	The size of an area represented by a map.
Congestion	When there is too much traffic and movement is difficult.
Pollution	The introduction of harmful materials into the environment.
Miles and Kilometres	Units to measure distance.

Possible Hazards...

How the local area has changed over time has had implications on how people travel to school and the hazards that have been created as a result of this.

- Increased number of cars and buses
- Larger population of people traveling in the local area
- Road crossings
- Obstructions/tripping hazards

Air pollution

air pollution is the presence of a substance in the air. This substance could have harmful and poisonous effects.

We should use our vehicles less often and walk more

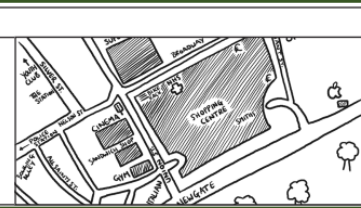
Most countries around the world face a similar problem of air pollution. If we work together as one whole, we can make the world a better place for everyone.

What is a travel plan?

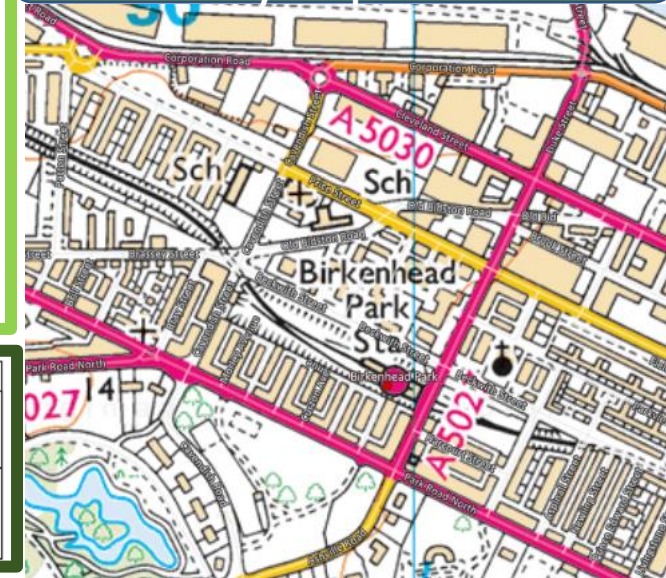
A travel plan is a package of actions designed to encourage safe, healthy and sustainable travel options. By reducing car travel, travel plans can improve health and wellbeing, free up car parking space, and make a positive contribution to the community and the environment.

Sketch Map

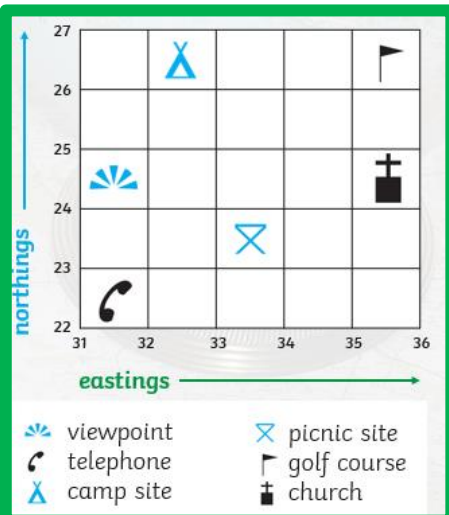
- Title
- Labels/annotations
- Simple lines
- Enough detail to give a rough idea
- A 'not to scale' note
- A north arrow



Ordinance survey map of our local area. What features can you spot?



Four-Figure Grid Reference



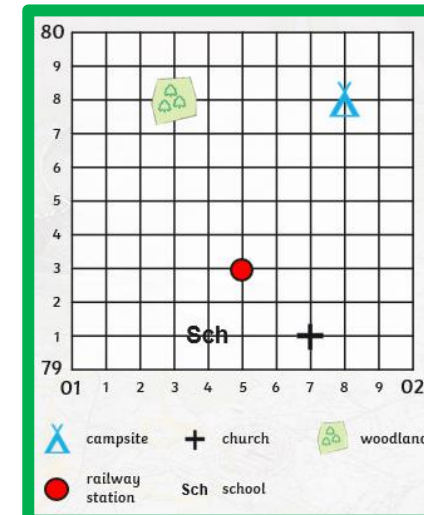
What OS map symbol is found at 3323?

The picnic sight

What is the grid reference for the Church?

3524

Six-Figure Grid Reference



What OS map symbol is found at 015793?

Railway station

What is the six-figure grid reference for the school?

014791

Remember...
eastings
then
northings!

Along the
corridor and
up the
stairs!

Key Vocabulary

Biodiversity	The number of different types of plants and animals found in a particular environment.
Biome	A community of plants and animals that is suited to a particular climate.
Ecosystem	A community of plants and animals that affect each other and the area around them
Rainforests	Forests that are home to many different types of plants and animals. They are located close to the Equator in places with a tropical climate, which is warm and wet all year round.
Deforestation	Clearing or thinning of forests by humans to make the land available for other uses.
Tropics	The tropics are the part of the earth between the Tropic of Cancer and the Tropic of Capricorn, near the equator where the weather is very warm.
Favela	Working class neighbourhoods in Brazil
Indigenous	Plants, animals or people that live or grow naturally in a place and have not been brought there from somewhere else.



Key Facts - The Amazon River

Name: The Amazon

Length: At 6,516 kilometres (4,048 miles) long it's the second longest river in the world. However, because it is also really wide and has many, many tributaries it actually transfers the largest volume of water of any river on Earth!

Source: The most distant source is found in the mountains of Peru. It is fed by melting glaciers.

Mouth: The mouth or mouths of the river are found on the East coast of Brazil where the Amazon flows into the Atlantic Ocean.

Location: The river flows through Peru and Brazil, but its tributaries (smaller rivers that merge into it) drain vast areas of Venezuela, Colombia, Ecuador and Bolivia too.

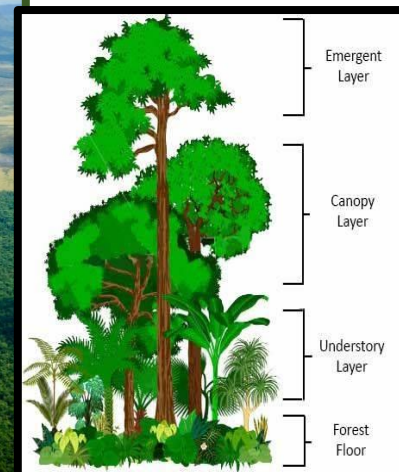
Key Facts - The Amazon Rainforest

Size: 5,500,000 square kilometers (or more than 2,100,000 square miles)

Country: Over half of the Amazon rainforest is found in Brazil with the remainder in Bolivia, Colombia, Ecuador, French Guiana and Guyana, Peru, Suriname and Venezuela.

Continent: South America

The Amazon is the world's largest rainforest and it is the most specie-rich (scientists say bio-diverse) place on Earth. It is home to over 500 species of mammals including the fearsome jaguar, and some pretty cheeky monkeys!



Key Vocabulary

European Union	The European Union is a group of 27 countries in Europe. These countries came together to make things better, easier and safer for people. They agreed to work together and help each other. In 2020, the UK left the European Union.
Government	Any group of people living together in a country, state, city, or local community has to live by certain rules. The system of rules and the people who make and administer them is known as a government.
Stereotype	A stereotype is a very easy and simple idea or opinion of a person, group or thing. Mostly, it is an incorrect judgement, idea or belief many people have about a group that is based upon how they look or behave. It is often reinforced by their race, culture, religion or gender.
Citizenship	Being a member of a particular country.
Multicultural	A society where many different cultures live together.
Immigration	The act of coming to live permanently in a different country.
Emigration	The act of leaving your own country to move permanently to another.
Identity	The fact of being, or feeling that you are, a particular type of person.
Democracy	Democracy means 'rule by the people'. In a democracy, like the UK, the people elect the government and have a say in how it is run. They do this by voting in elections

What is Britishness?

'Britishness' can refer to the qualities that are considered typical of British people. These qualities may be different for different people.

What does being British mean to you?



Identity

- Understanding identity is not just a case of knowing where we come from, it's a combination of connected culture, gender, race and religion. However, by digging deeper, you can start to think about identity as being far more complex, with connections to where they were born, their ancestry, education, wealth, health, income, and the place where they live.

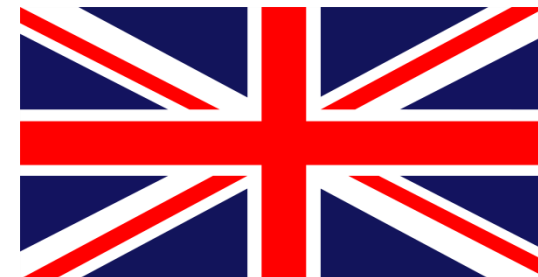
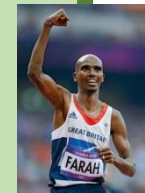


British Values

- The Rule of Law
- Democracy
- Individual Liberty
- Mutual respect for and tolerance of those with different faith and beliefs and for those without faith.

Refugees

- A refugee is a person who leaves the country they live in.
- They go and live in another country because they do not feel safe in the place where they live.
- It might be because of a war or a natural disaster.
- Mo Farah is a famous refugee. He is a famous runner who has won four Olympic medals. He was born in Somalia. He came to England when he was eight years old and could speak very little English.



Additional - North America

Key Vocabulary

Human features	Features of a place that are a result of human activity, such as shops, farms, homes and roads.
Physical features	Natural features of a place, such as mountains, rivers and seas.
Landscapes	What you can see when you look across an area of land.
State	An area of land with its own government. There are 50 states in the USA.
National park	An area of countryside protected by the state for the enjoyment of people or the preservation of wildlife.
Tundra	A large region with no trees.

Some of the North American countries:

Canada, Costa Rica, Dominican Republic, Guatemala, Jamaica, Mexico, St Kitts and Nevis, St Lucia, USA.

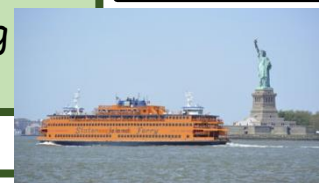
Key Facts - North America

- The largest country in North America is Canada, but the United States of America has the largest population.
- The most commonly spoken languages are English, French and Spanish.
- North America has many amazing physical features, including Niagara Falls on the border of Canada and the USA.

North America is massive and there is a huge amount to find out about here. From polar bears in the treeless **Arctic tundra** of Greenland and **Canada**, to the sun-kissed beaches and coral of **St Lucia** in the Caribbean. It is a striking and very varied continent.

USA

- Welcome to the United States of America (USA). The USA is a vast country, the world's third largest, and is made up of 50 **states**.
- It is home to famous cities such as Los Angeles, **Las Vegas** and **New York**, and natural wonders including the Grand Canyon, **Niagara Falls** and the **Mississippi River**



The Rocky Mountains

- The Rocky Mountains are found in western **North America**. They span from western **Canada** through the counties of British Columbia and Alberta all the way over the border into the **USA** through the states of Montana, Wyoming, Idaho, Colorado, New Mexico, Utah, & Arizona.
- The Rocky Mountains are 76 million years old and their highest peak is Mount Elbert in Colorado which is 4401 metres (14,440 feet) high.
- Most of the mountain range now is protected by National Park status. This is to stop the area being damaged and built on. Most of the parks are popular with tourists for hiking, cycling and fishing in the summer and skiing and winter sports in the winter.

