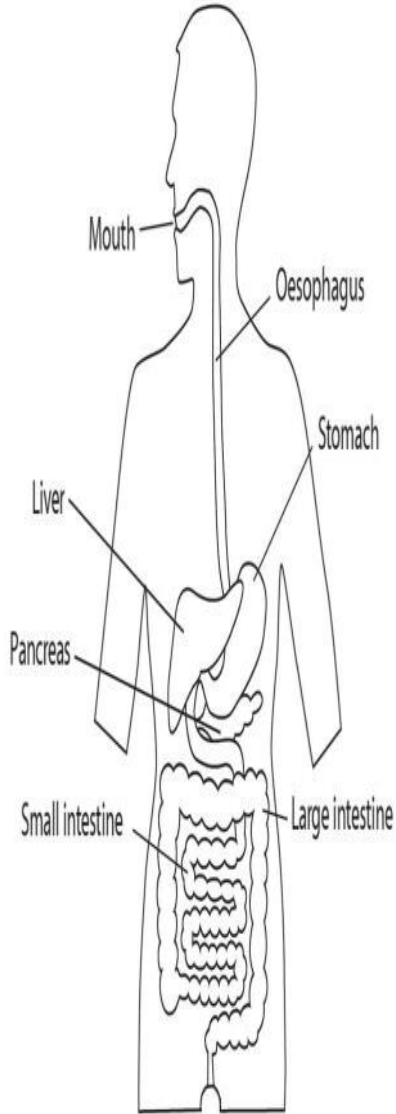


THE DIGESTIVE SYSTEM



Year 4 Autumn Term ANIMALS INCLUDING HUMANS

HUMAN DIGESTIVE SYSTEM

Mouth - Where food first enters the body. It is chewed and mixed with saliva, then swallowed.

Oesophagus - Tube of muscle which connects the mouth to the stomach.

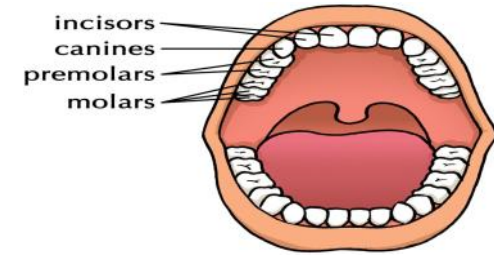
Stomach - Food is mixed with here with stomach acid and broken down to form a liquid.

Intestines - Liquid from the stomach passes into the small and large intestines. This is where nutrients and water we need is passed into the blood stream and transported around our body

Rectum - Any waste we do not need is stored here until it is ready to leave the body.

OLSE Science Knowledge Organiser

TYPES OF TEETH



IN-

INCISORS—At the front of the mouth and used for biting

CANINES - The sharpest teeth next to the incisors and used for tearing. They are sharp and pointed in predators for killing prey.

PREMOLARS - Flat, wide and used for chewing towards the back of the mouth.

MOLARS - These are at the back of the mouth. They are used for chewing and grinding food. They are wide and flat in shape, and include the wisdom teeth which appear in adulthood.

FOOD CHAINS

A food chain shows how each living thing gets food, and how nutrients and energy are passed from creature to creature. It starts with a source of energy, usually the sun, then it continues with a plant or producer. Some animals eat plants and some animals eat animals. These are the consumers. When animals are eaten they are called prey and the animals which eat them are called predators.

